

MELLETTTE COUNTY

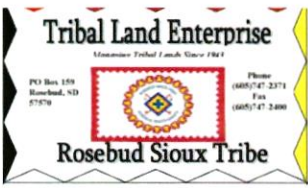
	Tract ID	Legal Desc.	Acres	Minimum Bid	Years	Bid
17	A5865-A, T5865-	Lot 2, SE1/4NE1/4, Sec. 30, T44N, R30W, Mellette County, Lot 1, NE1/4NE1/4, Sec. 30, T44N, R30W, Mellette County	FARM <u>90</u> HAY _____ GRASS <u>85.45</u>	Tribal Member Minimum Bid \$4,003.13 Non-Tribal Member Minimum Bid \$6,701.73		
19	T11683	N1/2NW1/4 Sec. 29, T42N, R32W, Mellette County	FARM _____ HAY _____ GRASS <u>80</u>	Tribal Member Minimum Bid \$1,000.00 Non-Tribal Member Minimum Bid \$1,640.00		
20	T5597	Lots 1, 2, Sec. 1, T.41N., R.26W. Mellette County	FARM _____ HAY _____ GRASS <u>79.96</u>	Tribal Member Minimum Bid \$999.50 Non-Tribal Member Minimum Bid \$1,639.18		
36	T339- T341- T3854-	SE¼ of Sec 17, SE¼ of Sec 16, NW¼ of Sec 21, T41N., R26W. Mellette County	FARM <u>115</u> HAY _____ GRASS <u>355</u>	Tribal Member Rate \$8,060.00 Non-Tribal Member Rate \$13,602.50		
38	T11707	NW¼SE¼ of Sec.25 T39N., R32W., Mellette County	FARM _____ HAY <u>17.25</u> GRASS _____	Tribal Member Minimum Bid \$319.00 Non-Tribal Member Minimum Bid \$465.00		
	T3243	NE¼ of Sec. 22, T.40N., R32W., Mellette County	FARM <u>160</u> HAY _____ GRASS _____	Tribal Member Minimum Bid \$4,320.00 Non-Tribal Member Minimum Bid \$7,120.00		

GREGORY COUNTY

	Tract ID	Legal Desc.	Acres	Minimum Bid	Years	Bid
4	T2800-	SE1/4, Sec. 34, T99N, R72W, Gregory County	FARM _____ HAY _____ GRASS <u>160</u>	Tribal Member Minimum Bid \$4,000.00 Non-Tribal Member Minimum Bid \$9,120.00		
6	T11014	NW¼, Sec 33, T95N, R70W, Gregory County	FARM <u>20</u> HAY _____ GRASS <u>130</u>	Tribal Member Minimum Bid \$4,330.00 Non-Tribal Member Minimum Bid \$9,570.50		

TRIPP COUNTY

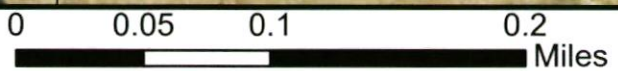
	Tract ID	Legal Desc.	Acres	Minimum Bid	Years	Bid
	A3265- A3265-A, A3265-5A	NE¼, Lots 1 & 2, E½NW¼, Lots 3 & 4, E½SW¼ Section 18, T.102N., R78W., Tripp County	FARM _____ HAY _____ GRASS <u>474.2</u>	Tribal Member Minimum Bid \$10,906.60 Non-Tribal Member Minimum Bid \$23,710.00		



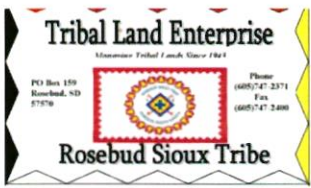
A5865-A, T5865 Mellette County



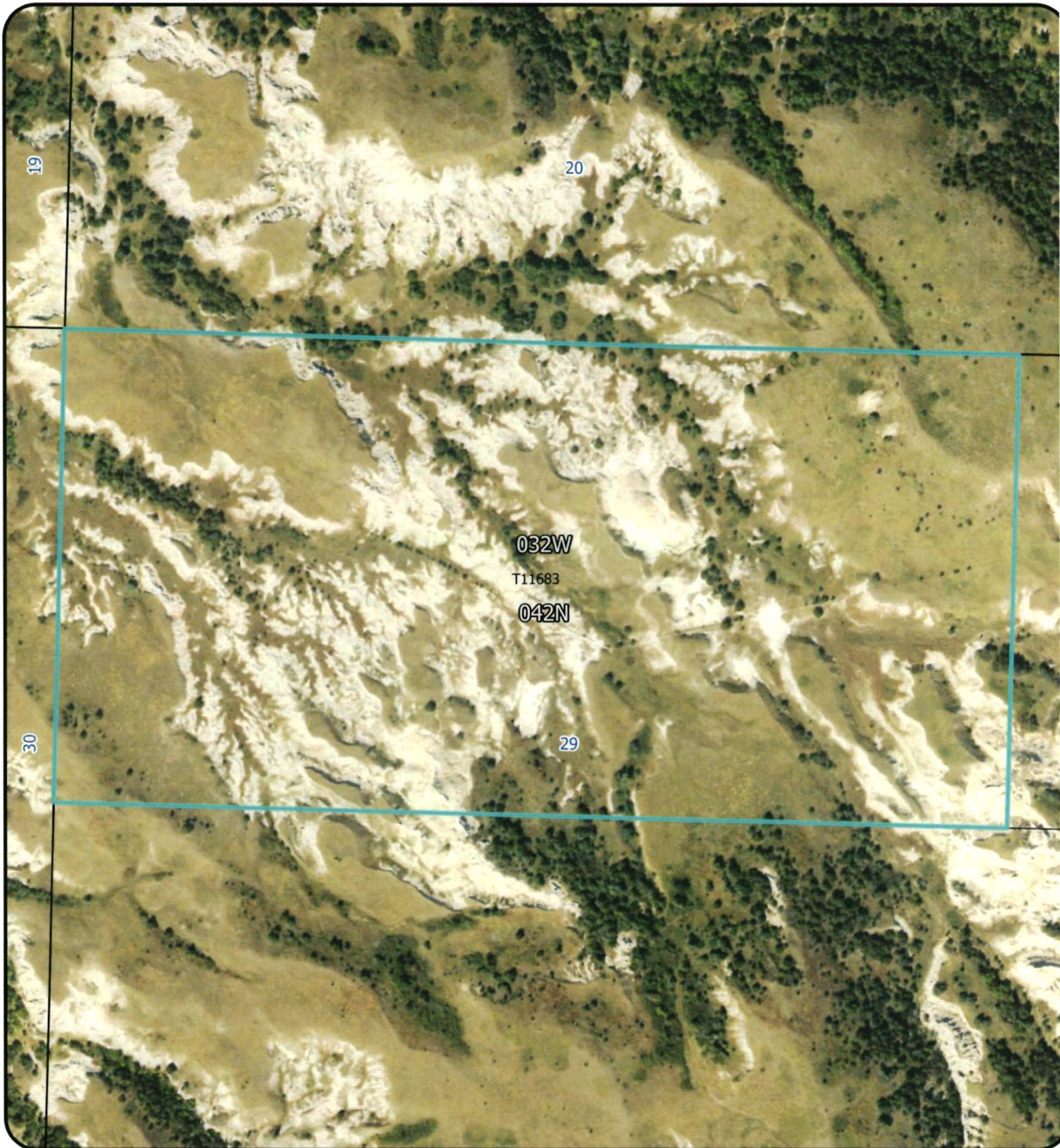
A5865-A, T5865 in Mellette County
Tribal Member Minimum Bid \$4,003.13
Non-Tribal Member Minimum Bid \$6,701.73
85.45 acres of grassland, 90 acres of farm



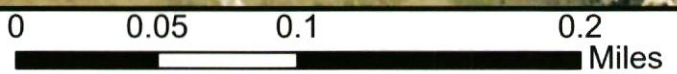
Current Time: 4/9/2025 4:26 PM



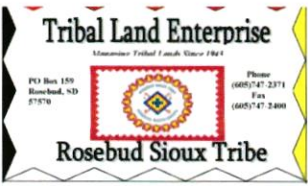
T11683 Sheet Mellette County



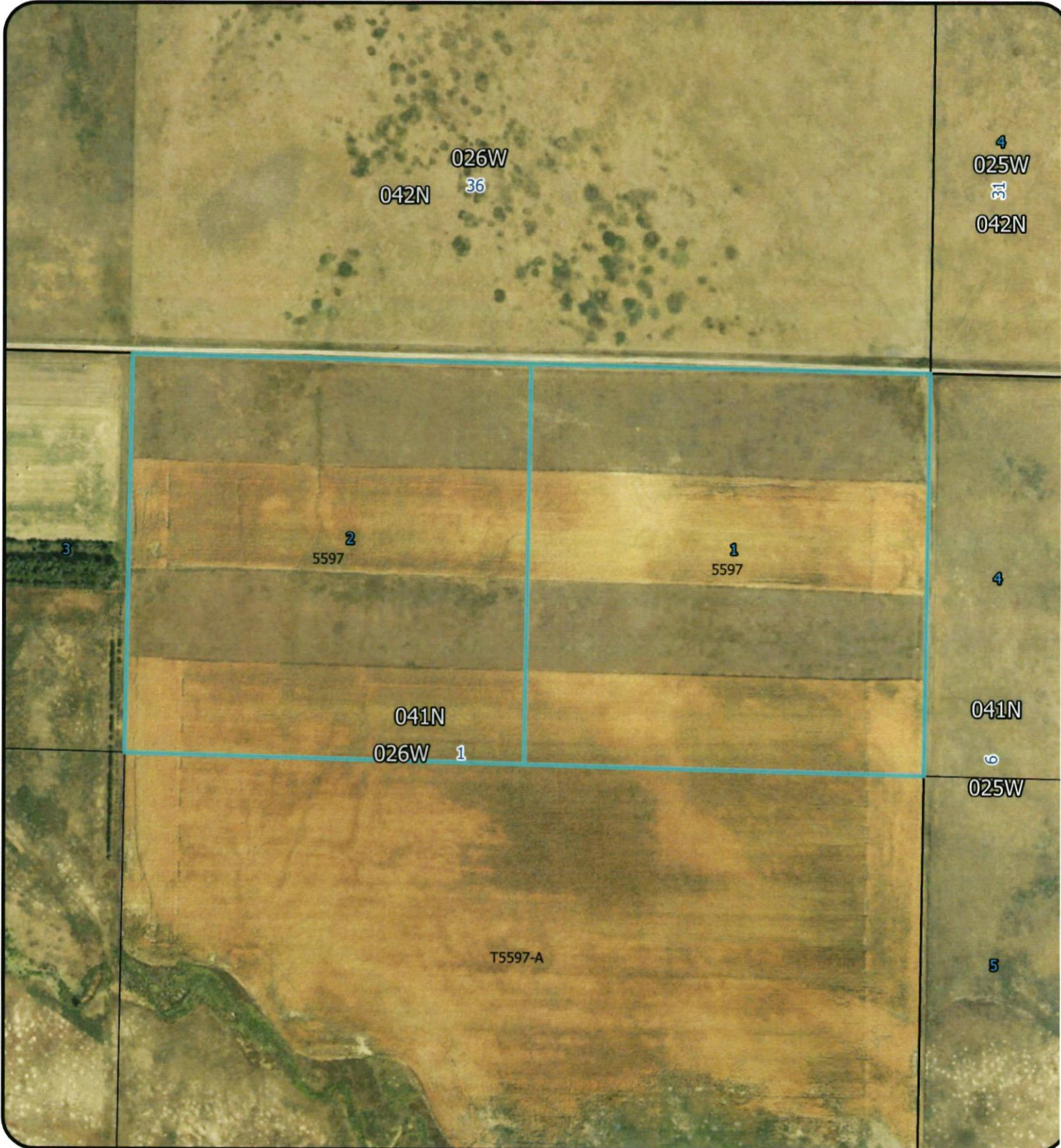
T11683 in Mellette County
Tribal Member Minimum Bid \$1,000.00
Non-Tribal Member Minimum Bid \$1,640.00
80 acres of grassland



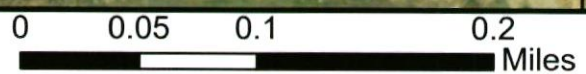
Current Time: 4/11/2025 9:40 AM



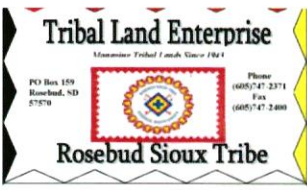
T5597 Mellette County



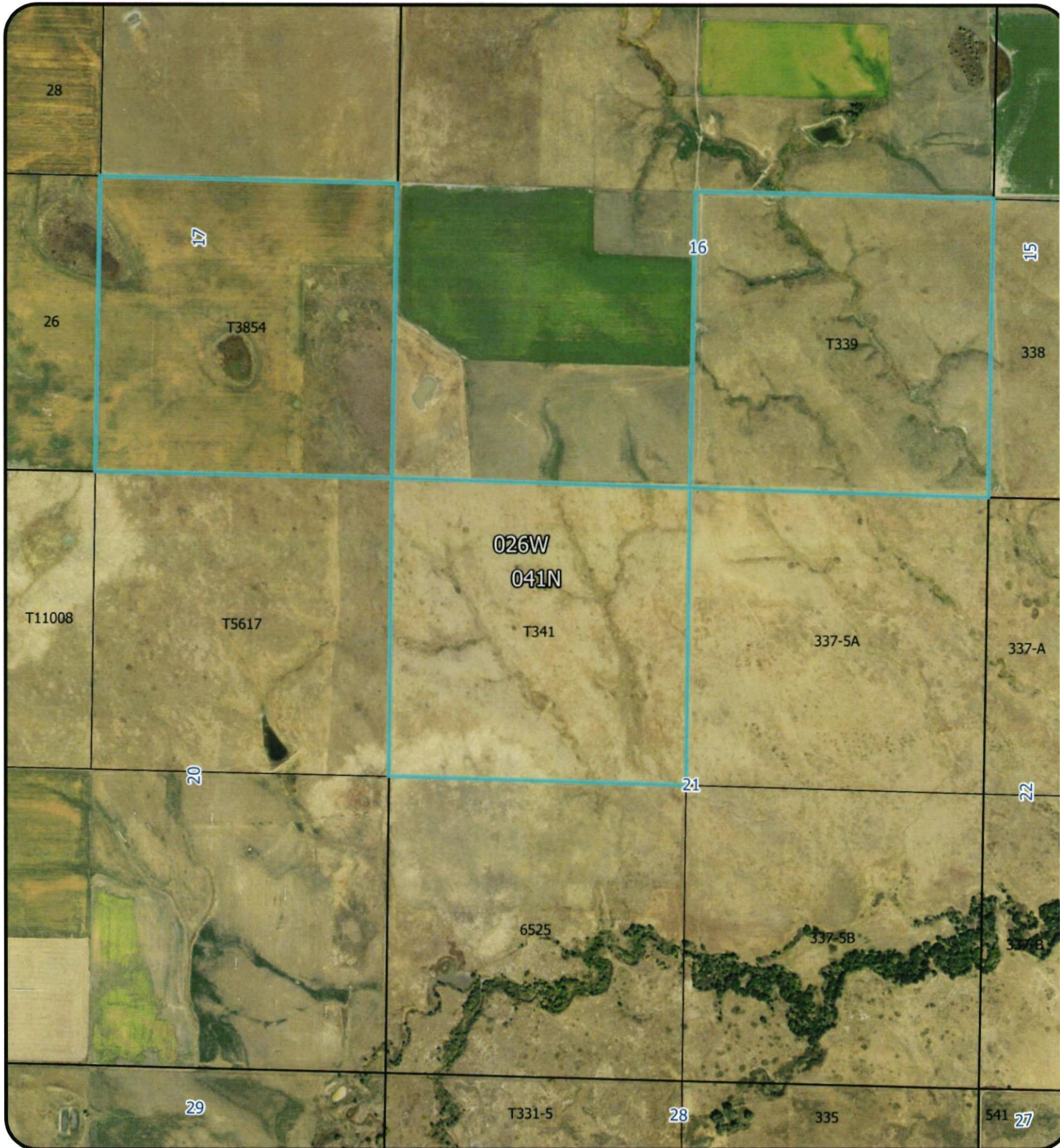
5597 in Mellette County
Tribal Member Minimum Bid \$999.50
Non-Tribal Member Minimum Bid \$1,639.18
79.95 acres of grassland



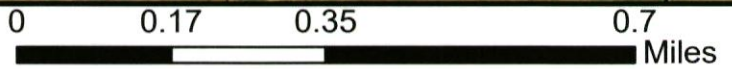
Current Time: 4/11/2025 9:43 AM



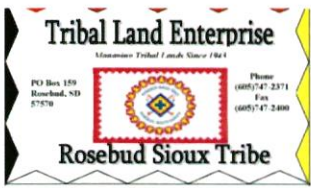
T339, T341, T3854 Mellette County



T339, T341, T3854 in Mellette County
Tribal Member Rate \$8,060.00
Non-Tribal Member Rate \$13,602.50
355 acres of grassland, 115 acres of farmland



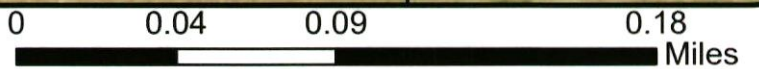
Current Time: 4/11/2025 11:52 AM



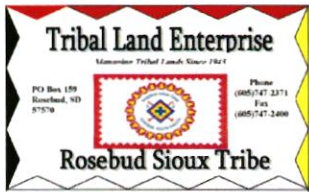
T11707 Mellette County



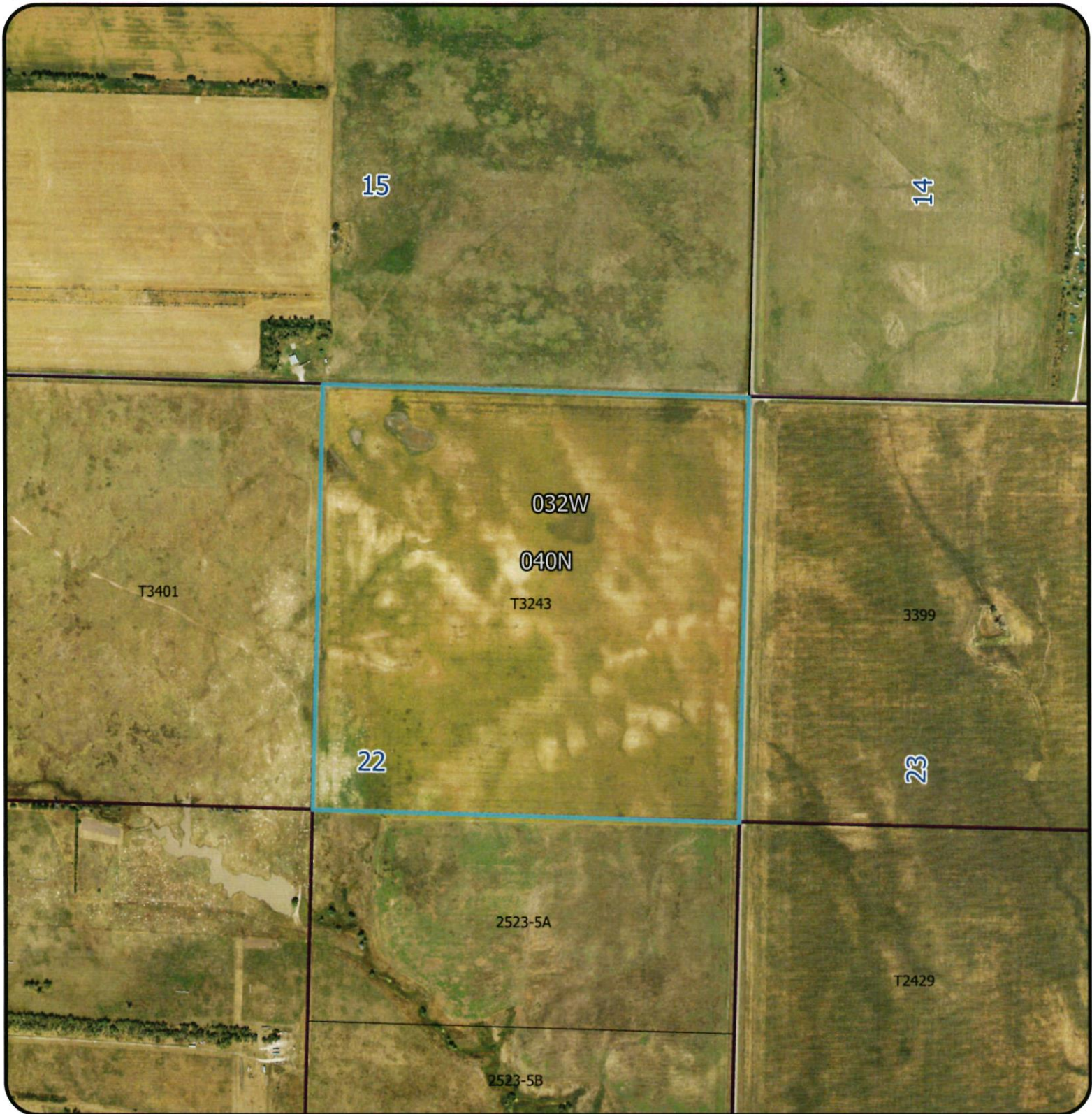
T11707 in **Todd** County
Tribal Member Minimum Bid \$319.00
Non-Tribal Member Minimum Bid \$465.00
17.25 acres of hayland



Current Time: 4/11/2025 11:59 AM

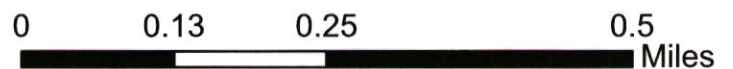


T3243 in Mellette County

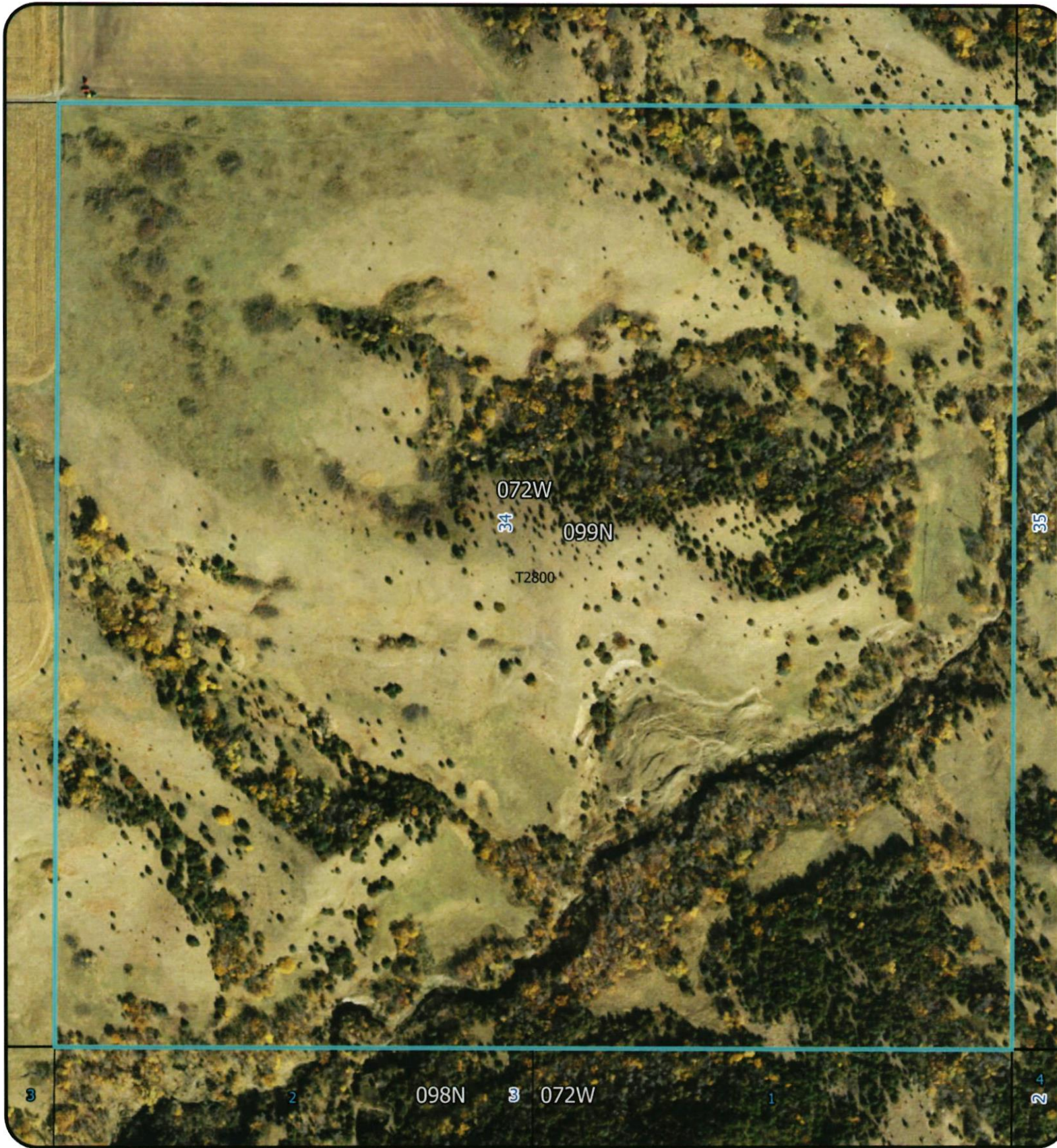


T3243 Section 22, T40N, R32W.
Tribal Member Minimum Bid \$4,320.00
Non-Tribal Member Minimum Bid \$7,120.00
160 acres of farm land

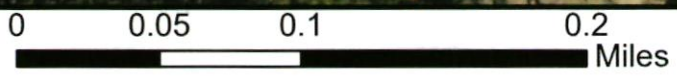
This map is for reference only
Map Created by TLE Lease
Manager-Alex Romero

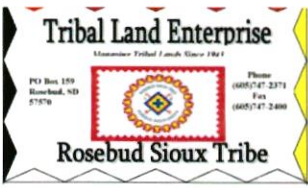


Tract T2800 Gregory County Bid Sheet

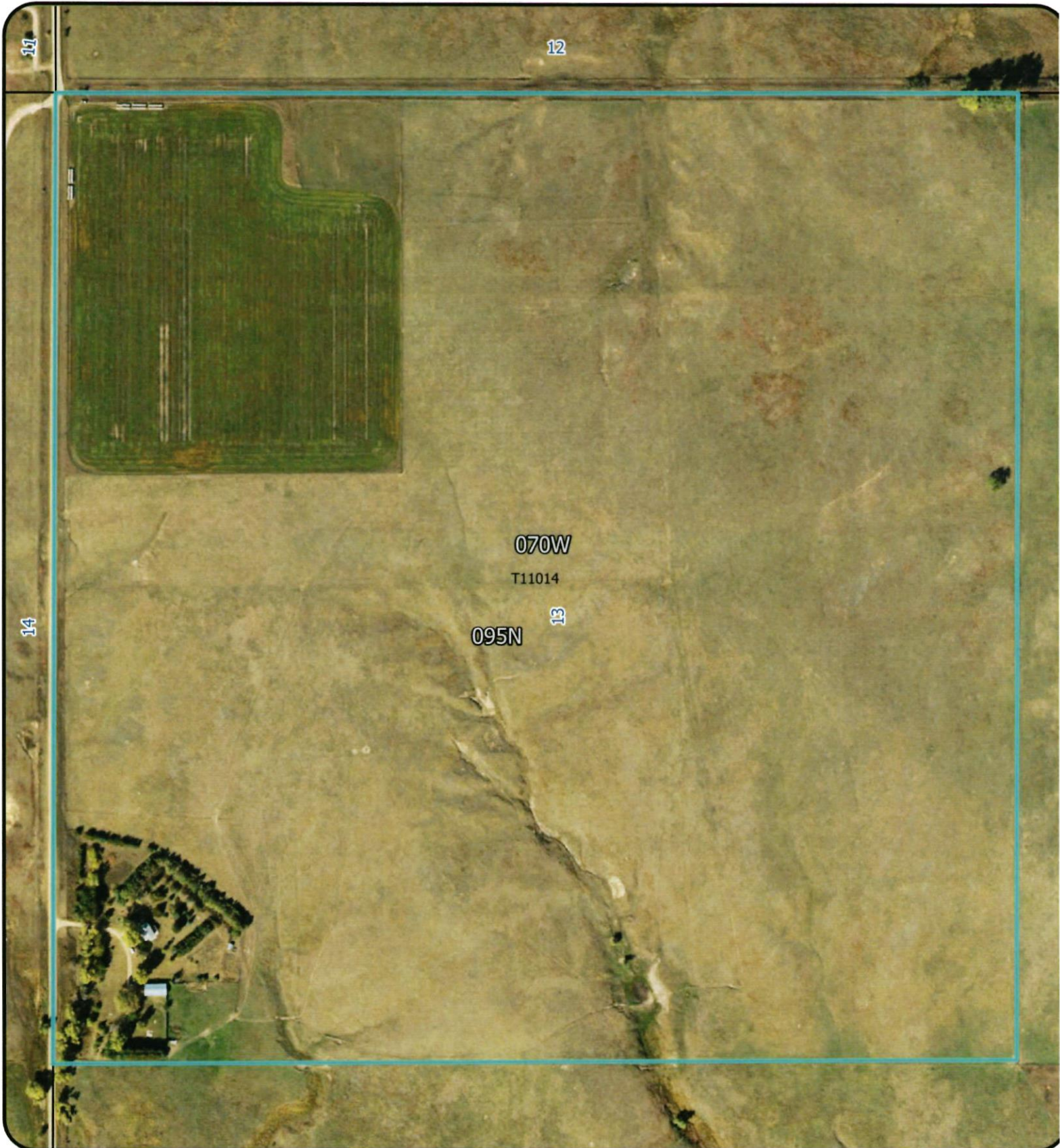


Tribal Member Minimum Bid \$4,000.00
 Non-Tribal Member Minimum Bid \$9,120.00
 160 acres of grassland

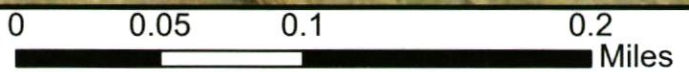




Tract T11014 Gregory County Bid Sheet



Tribal Member Minimum Bid \$4,330.00
Non-Tribal Member Minimum Bid \$9,570.50
130 acres of grassland, 20 acres farmland



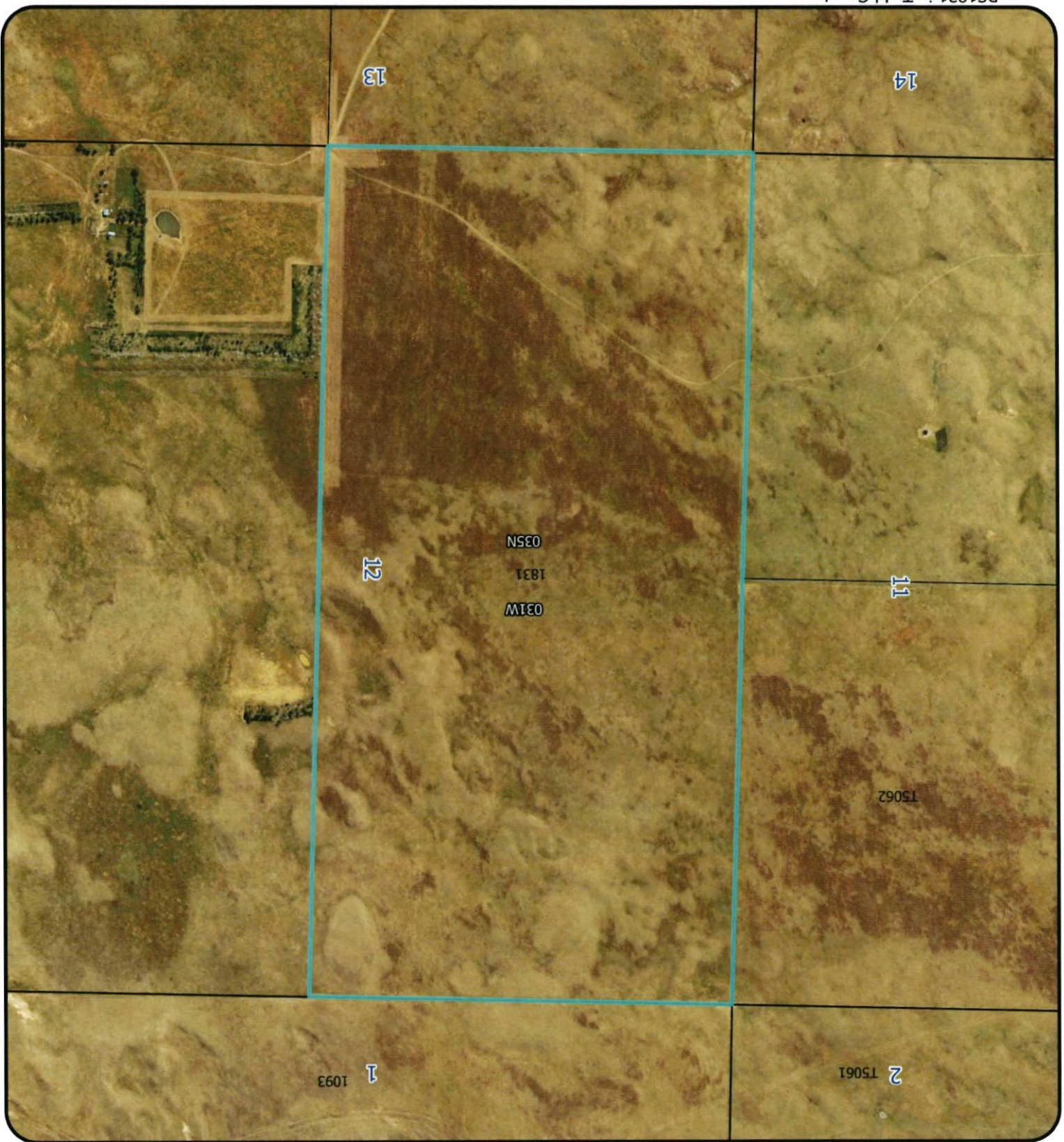
Current Time: 4/11/2025 2:38 PM

TODD COUNTY

	Tract ID	Legal Desc.	Acres	Minimum Bid	Years	Bid
2	RS1831-	An undivided 22638000/27216000 interest in and to; W1/2, Sec. 12, T35N, R31W, Todd County	FARM _____ HAY _____ GRASS <u>320</u>	Tribal Member Minimum Bid \$3,840.00 Non-Tribal Member Minimum Bid \$6,080.00		
5	T5062-CREP	NE1/4, Sec. 11, T35N, R31W, Todd County	FARM _____ HAY _____ GRASS <u>160</u>	Tribal Member Minimum Bid \$1,920.00 Non-Tribal Member Minimum Bid \$3,040.00		
12	T3230	NW¼, Sec. 8, T39N, R32W, Todd County	FARM <u>160</u> HAY _____ GRASS _____	Tribal Member Minimum Bid \$4,320.00 Non-Tribal Member Minimum Bid \$7,120.00		
21	T7214	W1/2SE1/4, Sec. 27, T39N, R26W, Todd County	FARM <u>32</u> HAY _____ GRASS <u>42.5</u>	Tribal Member Minimum Bid \$1,374.00 Non-Tribal Member Minimum Bid \$2,231.50		
22	RS2495	Lots 1, 2, 3, 4, S½NE¼ Sec. 1, T38N, R27W, Todd County	FARM _____ HAY _____ GRASS <u>160.25</u>	Tribal Member Minimum Bid \$1,923.00 Non-Tribal Member Minimum Bid \$3,044.75		
24	T6638	SW¼ of Sec 20, T39N., R26W., Todd County	FARM _____ HAY _____ GRASS <u>150.5</u>	Tribal Member Minimum Bid \$1,806.00 Non-Tribal Member Minimum Bid \$2,859.50		
	T11223	SW¼ of Sec 24, T38N., R26W., Todd County	FARM _____ HAY _____ GRASS <u>150.5</u>	Tribal Member Minimum Bid \$1,920.00 Non-Tribal Member Minimum Bid \$3,040.00		

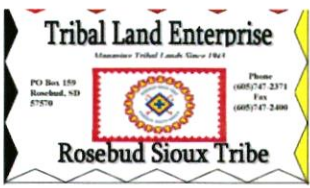


RS1831 Bid Sheet Todd County



RS1831 in Todd County
Tribal Member Minimum Bid \$3,840.00
Non-Tribal Member Minimum Bid \$6,080.00
320 acres of Grazing land

Current Time: 4/9/2025 1:14 PM

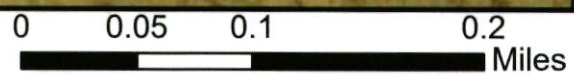


T5062

Todd County



T5062 in Todd County
Tribal Member Minimum Bid \$1,920.00
Non-Tribal Member Minimum Bid \$3,040.30
160 acres of Grazing land



Current Time: 4/9/2025 1:32 PM



T3230 in Todd County



T3230 Section 8, T39N, R32W.
Tribal Member Minimum Bid \$4,320.00
Non-Tribal Member Minimum Bid \$7,120.00
160 acres of farmland

This map is for reference only
Map Created by TLE Lease
Manager-Alex Romero

